

CE^{2.0}

NEW



WD-4204

2x GbE/RJ45 + 2x 1G/2.5G, RJ45 + 2x 1G/10G/SFP+
L2+ Carrier Ethernet Switch

The WD-4204 is the next generation of network interface device (NID) for business connection in Ethernet virtual connection technology and mobile backhaul transportation beyond 4G service. The WD-4204 is equipped 2 SFP+ slots as dual rate 1000Base-X/10Gbase-X and 2 ports 10M/100M/1Gbps RJ45 as well as 2 ports 10M/100M/1G/2.5Gbps RJ45 network interfaces. It can be configurable as either UNI or NNI device and enabled to provision E-Line, E-LAN, E-Tree, E-Access services which are CE(Carrier Ethernet) 2.0 compliant for Metro Ethernet network deployments.

The WD-4204 is WatchDog first switch product enabled 2.5Gbps data rate to support multigigabit speed. The enterprise will be able to leverage the reliable and secure Ethernet based high speed leased line service and also connect the existing Cat5e/Cat6 cabling infrastructure with WiFi 6 device, small cell or powerful workstations to break through the limitation of 1Gbps rate for content richer applications such as Cloud storage, 4K video streaming or HD teleconferencing.

The WD-4204 is positioned as an universal network interface device (NID) for most carrier Ethernet access applications. It has built-in hardware based Ethernet OAM engine and is compliant to the latest OAM standards to deliver the committed SLA performance KPIs measurement on a per service basis.

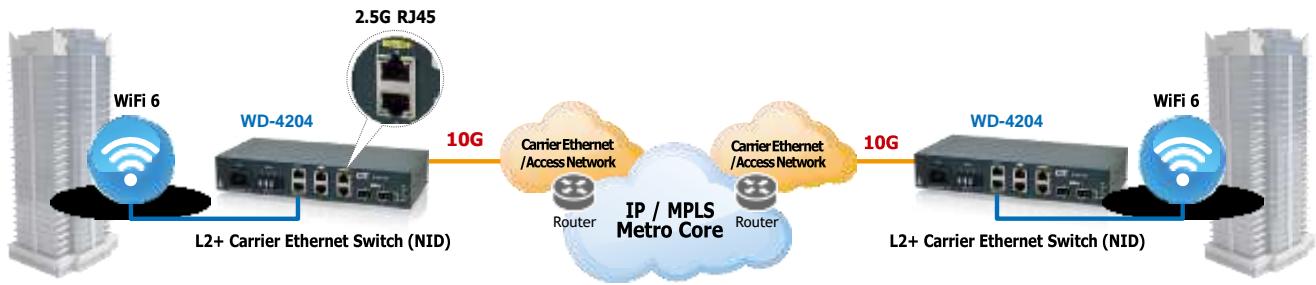
Features

- The next generation of network interface device (NID), at customer premise, fulfilling the large-scale carrier Ethernet deployment for intelligent business connection and mobile backhaul services complied to CE 2.0 standard.
- CE2.0 standards compliant product guarantees the full interoperability with other MEF certified equipment and reduces the risks and cost of Carrier Ethernet network deployment for operators and service providers.

Specifications

Interface	10M/100M/1Gbps RJ45x2 + 10M/100M/1G/2.5Gbps RJ45x2 + 1G/10Gbps SFP+ x2	Security	IEEE 802.1x port based access control, MAC based access control authentication, RADIUS authentication, limited MAC address learning, IP/MAC binding, ACL rule based filtering, TACACS+, IP source guard, DHCP snooping/relay option 82, ARP inspection
Console Port	RJ-45 console port x 1 (RS-232)	IP Multicasting	IGMP throttling, IGMP filtering, IGMP fast leave, IGMP snooping v1/v2/v3, MVR, MLD snooping v1/v2
Management port	10/100/1000Base-T RJ45 x 1	Storm Control	Unknown Unicast/Broadcast/Multicast storm suppression
Switching Fabric capacity	54Gbps	Management	Web/Telnet CLI/SNMP/console interface, Web/CLI authentication, SSH v2, HTTPs, port mirroring, RSPAN, syslog, IPv6 management, NTP
Filter & Forward rate	14880pps at 10Mbps, 148800pps at 100Mbps, 1488000pps at 1Gbps, 14880000pps at 10Gbps	SNMP Agent	SNMP v1/v2c/v3, RMON Group 1,2,3 and 9
Transmission	Store and Forward Switching	Software Upgrade	TFTP/HTTP
Method Standard	IEEE 802.3 az, IEEE 802.1Qbb, IEEE 802.3u, IEEE 802.3z, IEEE 802.3ae, IEEE 802.3x, IEEE 802.1p, IEEE 802.1Q, IEEE 802.1ad, IEEE 802.1D, IEEE 802.1w, IEEE 802.1s, IEEE 802.1x, IEEE 802.3ad	Ethernet OAM	IEEE 802.3ah, IEEE 802.1ag, ITU-T Y.1731, RFC2544 ITU-T Y.1564
Packet Buffer	8M bits	LED Display	Power, System, Console, Link, Speed/Act
MAC Table Size	16K	Power Input	100V ~ 240VAC, -36 ~ -60VDC
Max. Packet Size	10K Bytes	Power	< 15W
VLAN Feature	IEEE 802.1Q tagged VLAN(Max. 4K VLAN groups), port based VLAN, MAC based VLAN, protocol based VLAN, private VLAN, IEEE 802.1ad Q-in-Q, VLAN Translation, GVRP	Consumption	
QoS Feature	Supports Hierarchical Qos, IEEE 802.1Qbb Priority based flow control, IEEE 802.1p 8 priority queues per port, CoS based on switch port/VLAN ID/DSCP/TCP/UDP port, IEEE 802.1p priority tag remarking, DSCP remarking, Port based ingress/egress rate limit	Operating Temperature	0 ~ 50°C
L2 switching protection	3 colors marker-CIR/EIR/Burst bandwidth control STP, RSTP, MSTP, ITU-T G.8031/G.8032 Ethernet ring protection	Storage Temperature	-25 ~ 70°C
Trunking	IEEE 802.3ad LACP (Max. 3 trunking groups, Max. 6 ports per trunking group)	Humidity	5% ~ 90% (non-condensing)
		Dimensions	117 x 250 x 43.8 mm (D x W x H)
		Regulatory	FCC, CE

Application



Ordering Information

ModelName	Description
WD-4204-AC	1G RJ45 x 2 + 1G/2.5G RJ45 x 2 + 1G/10G SFP+ slots x 2 L2+ Carrier Ethernet Switch with single AC power supply built-in
WD-4204-DC	1G RJ45 x 2 + 1G/2.5G RJ45 x 2 + 1G/10G SFP+ slots x 2 L2+ Carrier Ethernet Switch with single DC power supply built-in
WD-4204-AD	1G RJ45 x 2 + 1G/2.5G RJ45 x 2 + 1G/10G SFP+ slots x 2 L2+ Carrier Ethernet Switch with AC & DC power supply built-in

Accessories (optional)

10G SFP+ Transceiver Module

ModelName	Description
WD-1000-SR85	10G SFP+ SR/SW MMF 300m, 850nm VCSEL, 10G Ethernet/FC/SDH/SONET
WD-1010-LR31	10G SFP+ LR/LW SMF 10km, 1310nm DFB DML, 10G Ethernet/FC/SDH/SONET
WD-1040-ER55	10G SFP+ ER/EW SMF 40km, 1550nm DFB EML, 10G Ethernet/FC/SDH/SONET
WD-1080-ZR55	10G SFP+ ZR/EW SMF 80km, 1550nm DFB EML, 10G Ethernet/FC/SDH/SONET
WD/W-RMK	19" rack mount kit

Rack Mount Kit

ModelName	Description
GSW/MSW-RMK	19" rack mount kit

Power Type
WD - 4204 - □□
 Example: WD - 4204