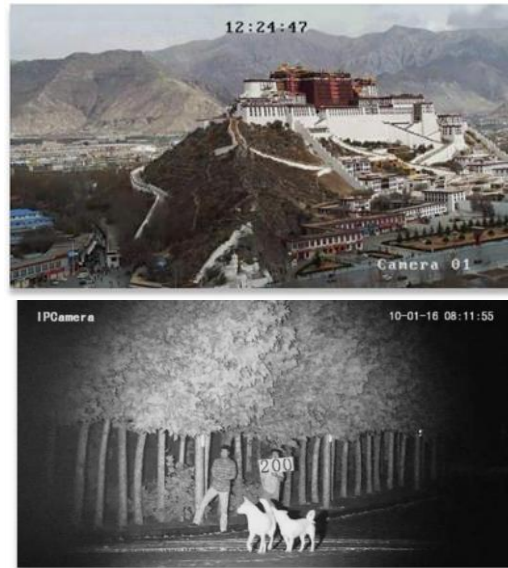


High Speed Laser Night Vision Dome Camera WDPTZ20IP45XL



WD Laser series high speed laser night vision dome camera, 2 megapixel, can monitor a region of 800m clearly at night. Consist of NIR laser illumination, PT, precise gearing, HD lens, digital encoder, CCD and MCU. The mechanical design of PTZ is simple and stable. It could rotate to the proposed position quickly and accurately.

The camera has 255 presets, recording and patrol function and could preset anywhere. It also have automatic exposure, automatic focus function.

Feature

- ◆ 50°laser illuminator, 2 MP HD CMOS, max illumination distance 700m-800m.
- ◆ Unique DSS laser angle control, min 0.1°sync zoom accompany camera, support manual zoom and sync zoom.
- ◆ Unique GHT laser homogenizing technology.
- ◆ Independent photo-resistor switch make sure the camera color mode and laser on/off at the same time. Built-in intelligent delay to avoid the influence of car light.
- ◆ All metal cooling housing, CGS cooling system and double sun block, night vision module cycle air-cooling.
- ◆ SDE image detail enhancement technology, no noise, B/W and B/W inverse color mode.
- ◆ Multi-bearing structure.
- ◆ Support online software update.
- ◆ Electric motor drive, reaction quick, rotation smoothly, tolerance less than 0.1°.
- ◆ Support 3D intelligent positioning function, click tracking enlarge.
- ◆ Address and protocol DIP switch is on the side.
- ◆ Weatherproof rate IP66, anti-rain, anti-dust, TVS4000V anti-lightin.

Application

City Safety, stadium/plaza/scenic spot monitoring, oilfield safety, lake&river monitoring, freeway & railways security, seaport & airport security.

Technical specification

Model	WDPTZ40IP45XL
Detection	Day:1500m; Night: 800m
CCD	1/2.8" CMOS, HD 2.1 MP, 1920X1080, Auto ICR switch, color to B/W mode
Video encoding	Video compression H.264, code stream 32k~8Mbps, Support dual-stream, the heart, smart restructuring, electronic shutter, white balance, 3D DNR, DWDR, automatic exposure, support SD card, motion detection, mask alarm
Focal length	5.5~180mm, 45 optical zoom F1.6~F5.0
FOV	65°~2.3°
Min. illumination	0.05lux /0.005lux
Consumption	5W, 808nm,NIR
Laser lens	30mm F1.0 Fast lens, GHT laser homogenizing technology
Laser angle	2°~50°
Angle control	DSS laser angle control technical, 30ms fast track response, min 0.1°sync zoom accompany camera, support manual zoom and sync zoom.
Optical axis aiming	0.01°SLM optical axis aiming and locking
Laser on/off	Auto/manual
PTZ	Pan: 360°continuously, Tilt: -90°~+5° (Support auto reverse)
Rotation speed	Pan: 0.01°~200°/s, Tilt: 0.01°~120°/s, max speed of calling preset 250°/s, rotation speed vary automatically according to the focal length
Preset	255, support memory record after power breakdown, scan, keep watch
Interface and protocol	RJ45, 10/100/1000M Ethernet, TCP/IP, RTP/RTCP, HTTP etc protocol
Compatibility	Support ONVIF,GB/T28181
Customized function	Customizable privacy shade, 3D box chosen magnification
Online update	Support online update
Baud rate	2400/4800/9600/19200bps
Weatherproof	IP66, TVS4000V anti-lighting, anti-wave
Operational temp.	-30°C~60°C, <90%RH non-condensing
Power supply	DC12V/4A, common≤40W,peak≤60W
Dimension	Φ230(mm)*348(mm)
Weight	5kg

* The detection distance is related to the object and environment etc. Please contact with us for further information.

For More Information
info@mywatchdog.in

Apollo Infoways Private Limited
 G-149, Sector -63
 Noida, U.P. 201301
 Ph: 0120-4122342 (4 Lines)
www.mywatchdog.in

